

Product

- ▶ Epicor® iScala®

Benefits

- ▶ Grow your business with deeper insights into:
 - Productivity and margins
 - New business opportunities
 - Performance across operations
- ▶ Use content packs to:
 - Better visualize inventory usage
 - Monitor profit growth
 - Drill down into lines on income statements
 - Maximize inventory effectiveness
 - Manage quality processes
 - Analyze resource efficiencies

Key Features

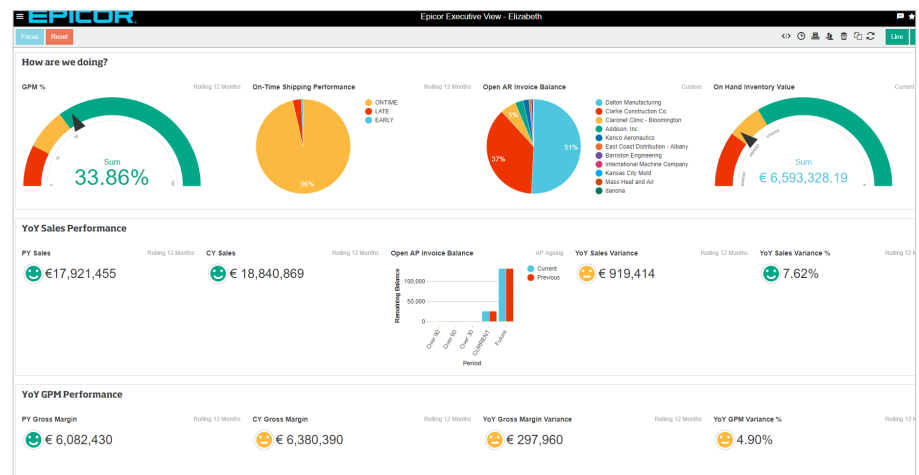
- ▶ Built for manufacturers and services providers
- ▶ Offers fast implementation
- ▶ Fast, flexible, and easy to learn
- ▶ Based on next-generation analytics
- ▶ Integrated with iScala plus other data sources of your choosing
- ▶ Keeps you connected with mobile access
- ▶ Delivered as a complete, scalable cloud service—no hardware necessary
- ▶ Does not require iScala licenses for your users to log into EDA
- ▶ Public Internal Dashboards feature provides a live display link

Achieving New Levels of Business Insight

Epicor Data Analytics (EDA)—powered by Phocas®—helps companies turn their data stored in Epicor iScala into actionable insights. With a deeper understanding of business data, companies can grow by reducing cost, identifying new opportunities, supporting specific programs, and speeding up decision-making.

EDA is an easy-to-use service in the cloud that can quickly start contributing to your business while helping you avoid error-prone approaches such as spreadsheets and manual calculations that often waste time and resources. It also stays up to date with the daily changes of your business.

EDA provides customizable and interactive dashboards to make it easy to analyze the data inside your business systems. The dashboards provide visual graphs, charts, and tables, so you can quickly review important information about your business performance and make informed strategic decisions. The EDA grid is where you conduct most of your analysis, and unlike a spreadsheet, you can “drill down” into the data with a simple click to reveal additional levels of detail.



Executive Dashboards give visual, easy-to-read representations of your business data.

EDA is a comprehensive, end-to-end service delivered and supported by Epicor. It is fully integrated with iScala, using your data to provide a broad understanding of your business performance.

With EDA, you have responsive mobile access to your data so you are never disconnected from your information. “Always connected” means you can respond quickly to the needs of your business and keep your organization highly productive.

As a cloud-based service, EDA minimizes cost impacts on your current system hardware, software, and maintenance budgets.



Mobile dashboards let you take your data with you.

Epicor iScala Content Packs

Each of the four iScala content packages provides starter dashboards and deep integration into a specific set of iScala data. You have the freedom to build onto these content packs with any additional fields from iScala and augment from other data sources such as Salesforce and ADP. Available content packs include:

- ▶ Sales—sales, orders, and quotes
- ▶ Materials—inventory, purchasing, and shipping
- ▶ Financials—AR/AP and general ledger
- ▶ Production—production reporting and quality

Sales

Quickly discover business trends by seeing more detail. Get deeper insight into sales results by account, location, geography, order, etc.

EDA answers these questions about your sales data:

- ▶ What is my average sales and gross margin by invoice?
- ▶ Who was buying before and is not buying now?
- ▶ Where are we succeeding geographically?

Gain full visibility into:

- Open orders
- Historical orders
- Lines
- Order cost
- Other cost
- Average cost
- Gross profit
- Gross margin
- Quantity delivered
- Quantity ordered
- Value OCU
- Value LCU
- Discount OCU
- Discount LCU
- Net LCU
- Net OCU

Materials

Improve the productivity of what is often your largest fixed asset—your inventory—by making sure you invest in the right inventory mix. Maximize the effectiveness of your purchase spending and assess how your vendors are performing. Gain visibility, and track the progress of shipments.

EDA answers these questions about your materials data:

- ▶ What is our current inventory value today?
- ▶ What are our potential inventory shortfalls?

- ▶ What is on order on my open POs?
- ▶ Where are my shipments?

Gain full visibility into:

- Open Orders
- Historical Orders
- Quantity on-hand
- Inventory value
- PO Value OCU
- PO Value LCU
- PO Discount OCU
- PO Discount LCU
- PO Net LCU
- PO Net OCU

Financials

Better manage your cash flow with new insights. Understand what receivables have arrived and what payables are coming due. Gain a more holistic view of customer pay cycles, and make the most of vendor payment terms. Know what payment discounts have been received over a select time period to take targeted action.

Improve management's overall visibility into the business with drill-down capability into categorized accounts and transactions inside your income statement and balance sheet.

EDA answers these questions about your finance data:



Public Internal Dashboards give your employees the information they need when they need it.

	Code	Customer ID	Total Net Sales	Dec 2018	Nov 2018	Oct 2018	Sep 2018	Aug 2018	Jul 2018	Jun 2018	May 2018	Apr 2018	Mar 2018	Feb 2018	Jan 2018
	TOTAL		18,840,869	1,773,279	1,642,564	1,718,227	1,489,851	1,585,326	1,554,972	1,326,711	1,555,672	1,450,006	1,871,617	1,153,538	1,719,108
1	EPIC039	DALTON	7,987,135	753,692	620,000	827,789	405,923	750,878	557,451	622,762	710,310	625,230	695,240	593,140	824,720
2	EPIC037	CLARKE	7,182,335	967,450	811,493	878,669	286,318	621,747	613,292	544,312	634,532	579,169	588,877	292,594	363,884
3	EPIC0374	CLARBL	2,970,500	0	195,000	0	620,200	144,300	331,500	91,000	143,000	201,500	539,500	214,500	481,000
4	EPIC032	ADDISON	302,618	0	1,967	3,079	114,321	29,613	26,830	24,325	22,160	10,640	21,325	27,580	20,760
5	EPIC0348	KENCO	149,932	21,250	0	0	21,450	20,482	4,750	24,750	16,000	9,000	9,750	10,500	12,000
6	EPIC0314	ECD-A	113,550	12,760	8,228	5,742	24,576	7,451	5,518	12,045	10,458	7,569	4,239	7,882	7,082

The grid allows users to drill down in any direction to answer questions.

- ▶ What are this year's actuals versus last year's actuals by account?
- ▶ How long is money held up in AR?
- ▶ What payments are receivable and what invoices are due?
- ▶ Did we take advantage of discount terms and how much did we save?

Gain full visibility into:

- Amount paid
- Terms taken
- Amount received
- Amount owed
- Transactions for income statement and balance sheet

Production

Make certain that quality products are produced for the right customer at the right time—for the right price and right profit margin.

EDA answers these questions about your production data:

- ▶ What are my resource earned hours?
- ▶ Do I have differences in production rates between shifts?
- ▶ How do I improve the overall effectiveness of my resources?

Gain full visibility into:

- Planned Quantity
- Manufactured Quantity
- Due Date Variance
- Start Date Variance
- Capacity
- Works Order Load
- MRP Load
- Total Load
- Available Capacity
- Capacity Usage
- Capacity Usage (WO)
- Capacity Usage (MRP)

Requirements

Available for iScala Versions 3.0 FSP4, 3.1, 3.2, and higher, the lightweight SYNC application and one instance of data are stored on a local server with the majority residing in the cloud. Extra disk space is recommended that is 2.5 to 3 times the disk space of the data being loaded to the cloud. The only items required for subscription purchase are a starter pack of five named users—plus additional named users as desired. The Public Internal Dashboards feature requires a minimum of 15 EDA named users. View-only users are also available for read-only access, without the ability to analyze the data behind the charts or create dashboards or favorites. All other necessary components—such as iScala content and the SYNC application—are included.

EDA is powered by Phocas technology. Phocas ranked Top in 28 categories in the world's largest BI user survey—BARC BI 18. Phocas outperformed vendors like Power BI, Tableau, QlikSense, QlikView, IBM Cognos BI, and more to rank first in categories including—business benefits, project success, recommendation, product satisfaction, customer satisfaction, mobile BI, and implementer support.

About Epicor

Epicor Software Corporation drives business growth. We provide flexible, industry-specific software that is designed around the needs of our manufacturing, distribution, retail, and service industry customers. More than 45 years of experience with our customers' unique business processes and operational requirements is built into every solution—in the cloud or on premises. With a deep understanding of your industry, Epicor solutions spur growth while managing complexity. The result is powerful solutions that free your resources so you can grow your business. For more information, [connect with Epicor](#) or visit www.epicor.com.



Contact us today info@epicor.com www.epicor.com

The contents of this document are for informational purposes only and are subject to change without notice. Epicor Software Corporation makes no guarantee, representations, or warranties with regard to the enclosed information and specifically disclaims, to the full extent of the law, any applicable implied warranties, such as fitness for a particular purpose, merchantability, satisfactory quality, or reasonable skill and care. This document and its contents, including the viewpoints, dates, and functional content expressed herein are believed to be accurate as of its date of publication, February 2019. The results represented in this testimonial may be unique to the particular user as each user's experience will vary. The usage of any Epicor software shall be pursuant to the applicable end user license agreement, and the performance of any consulting services by Epicor personnel shall be pursuant to applicable standard services terms and conditions. Usage of the solution(s) described in this document with other Epicor software or third-party products may require the purchase of licenses for such other products. Epicor, iScala, and the Epicor logo are registered trademarks or trademarks of Epicor Software Corporation in the United States, certain other countries and/or the EU. Phocas is registered trademarks or trademark of Phocas Ltd in the United States, certain other countries and/or the EU. All rights reserved. All other trademarks mentioned are the property of their respective owners. Copyright © 2019 Epicor Software Corporation. All rights reserved.